

Operations Manual & Parts List for:
Model 20-7BM, 26NS and 34LG



Operating Instructions

1. Make sure Slicer is turned off.
2. Adjust tubes for the correct desired cut, using the bolts on each tube.
3. Fill tubes to the top with product.
4. Turn on the slicer and adjust speed to your needs.
5. Keep placing product on top of each other making sure there are at least three products in the tubes at all times.

DO NOT ALLOW YOUR FINGERS OR HAND TO GO BELOW THE SLOT IN THE TUBE!

6. When you are finished cutting, turn off the slicer, making sure there are at least three products left in the tubes. DISCONNECT POWER, then remove the products in the tubes.

FOLLOWING THESE INSTRUCTIONS WILL ELIMINATE UNNECESSARY PERSONAL INJURIES.




Caution: Read instructions for safe operation & maintenance carefully!



Commercial Slicer Co.

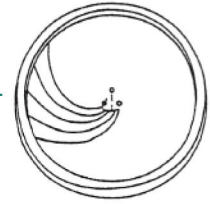
Maintenance of Slicer

 **For your Safety** - Disconnect the power before doing any maintenance.

Blade Disc

To remove disc ...

1. Remove sliding bottom deflector (part 43, see back cover).
2. Hold disc and turn disc nut (part 42) counter-clockwise.
3. Remove the nut and washer.
4. Pull off disc.



Blade Disc
(part 40)

To replace disc ...

1. Push disc up onto shaft, holding disc in place.
2. Place washer and nut onto shaft.
3. Tighten nut with wrench.

To adjust disc ...

1. Remove safety cap.
2. Loosen the set screws (part 1).
3. Adjust blade disc (part 40) making sure the blades are within 1/8" clearance from the carrying gear (part 32). If blades have choppers, adjust disc so choppers are 1/8" away from carrying gear.
4. Turn the blade disc by hand to make sure it is not rubbing against the carrying gear.
5. Tighten the two set screws on the top nut (part 2), replace the safety cap.

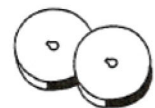
Shaft Grease Fittings

Located on shaft casing (part 9), on carrying gear (part 32) and on bearing bracket under 5:1 gear reducer (part 17)

1. Every six to ten weeks of daily use, using food grade grease, fill through grease fittings until grease is visible around top thrust bearing (part 4) & around the needle thrust bearing (part 26B).

Acetron Drive Gears

1. Gears should have a 1/8" clearance from the carrying gear (part 32) and blade disc (part 40) or warranty on parts 32 and 40 is void.



Acetron Drive Gears
(parts 28 and 37)
One Year Warranty on
Acetron Drive Gears

To remove Acetron Drive Gear ...

1. Loosen both 5/16" SST set screws and pull down.



Commercial Slicer Co.

17613 North 62nd Drive, Glendale, Arizona 85308, Phone: (888) 807-8090 Fax: (602) 298-4189

www.commercialslicerscompany.com

CARRYING GEAR

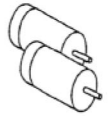
1. Remove the blade disc (part 40), top nut (part 2), and shaft (part 15).
2. From beneath the slicer, loosen the set screws in the carrying gear nut. (part 33), then loosen the carrying gear nut.
3. Loosen the set screws on the carrying gear top nut (part 10).
4. Adjust the carrying gear (part 32) making sure it does not rub against the SST top plate (part 25).
5. When the carrying gear is adjusted, bring down the top nut (part 10) and tighten the set screws. Tighten the set screws in the bottom nut (part 33).
6. Reinstall in order - the shaft, top nut and blade disc.
7. Follow directions for blade disc adjustment.



Carrying Gear
(part 32)

MOTORS

Motors are USDA wash down, need no maintenance, and come with a one year warranty.



Motors
(parts 16 and 18)

GEAR REDUCERS - check oil every six months.

To check oil ...

1. Remove the top air plug and bottom front set screw of reducer.
2. Make sure oil drips out.
3. If oil does not drip out, fill reducer with 600W Mobile Gear Oil until oil appears in the set screw hole.
4. Reinstall set screw and top air plug.

To change oil in reducer (!He suggest an oil change once a year.) ...

1. Remove reducer from the slicer.
2. Take out the air plug and set screw on the bottom of the reducer.
3. Drain oil.
4. Reinstall bottom set screw and refill through the air plug using 600W Mobile Gear Oil.
5. Make sure oil is filled by checking to see if it drips from the front set screw hole on the reducer.
6. Replace air plug and mount reducer back onto the machine.



Gear Reducers
(parts 17 and 19)

BLADES

Your new blades are made of 1/4 hard stainless steel and are factory set to your company's specifications. Blades are french curved and have a serrated edge designed for the cleanest cut available. ID# and setting# are stamped on the #1 blade of each set of blades.

New blades for your slicer have a life span of one to three years, depending on the use and care given to them.



Commercial Slicer Co.

17613 North 62nd Drive, Glendale, Arizona 85308, Phone: (888) 807-8090 Fax: (602) 298-4189

www.commercialslicerscompany.com

Blade Reconditioning (re-sharpening) ...

We recommend your slicer's blades be reconditioned every two to three months, depending on the use and care of your slicer and blades. Nicks, dents, or absence of teeth on your blades are of wear and if not reconditioned will significantly reduce the quality and tonnage of your cuts.

Blades can be sent to **Commercial Slicer** for reconditioning at a very reasonable cost, ensuring they receive the best reconditioning for a longer life span.

Basic machine metals: Stainless Steel, Tenzaloy Aluminum

Other Materials: Nylon, Acetron

All discs and carrying gears are hard coat anodized with a two year warranty on gears only. All Commercial Slicers are greased and oiled before delivery.



Safeguard! Never under any circumstance remove the top hopper or bottom deflector, or place hands near blades while the slicer is running.

Continue to Parts

(page 5)



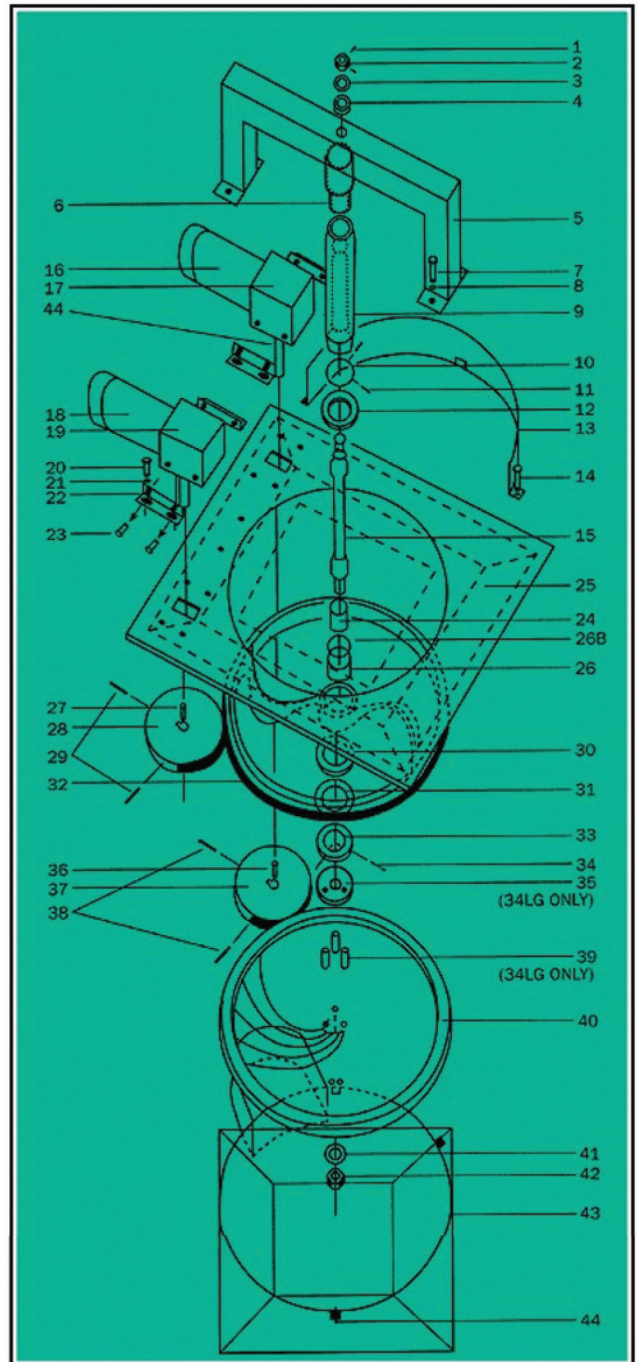
Commercial Slicer Co.

17613 North 62nd Drive, Glendale, Arizona 85308, Phone: (888) 807-8090 Fax: (602) 298-4189

www.commercialslicerscompany.com

Parts

Part No.	Description	Qty
1	Set screw	2
2	Locking nut	1
3	Washer	1
4	Thrust bearing	1
5	Carrying assembly	1
6	Brass bushing	1
7	5/8" bolt	4
8	5/8" lockwasher	4
9	Shaft casing	1
10	Carrying gear top nut	1
11	Set screw	2
12	SST Thrust Bearing	1
13	Top hopper	2
14	3/8" bolt	6
15	Idler shaft	1
16	1 1/2 HP motor wash down	1
17	Disc gear reducer 5:1	1
18	1 1/2 HP motor wash down	1
19	Carrying gear reducer 30:1	1
20	3/8" bolt	4
21	3/8" lock washer	4
22	Motor reducer mounting bracket	4
23	3/8" bolt	4
24	Brass bushing	1
25	3/8" SST plate	1
26	Carrying gear bushing	1
27	1/4" key	1
28	C/G drive gear	1
29	Set screw	2
30	SST Thrust bearing	1
31	Nylon seal 1/4" or 3/4" please specify	1
32	Carrying gear	1
33	Carrying gear nut (bottom)	1
34	Set screw	2
35	Disc Stop - discontinued	1
36	1/4" Key	1
37	Blade Disc Drive Gear	2
38	Set Screw	1
39	Discontinued	1
40	Blade Disc	1
41	Washer	1
42	Nut	1
43	Deflector - specify size	1
44	Bearing Bracket for Part 17	1
45	V Groove Casters	1



Warranty Information

All **Commercial Slicer Co.** machines are thoroughly inspected and tested before leaving the factory. We provide all customers with a full 5 year guarantee on all replacement parts of the slicer, due to defect in materials and/or workmanship. Blades and discs are covered under this warranty for defect only.

Warranty is void if proper and operating procedures are not followed.



Commercial Slicer Co.

17613 North 62nd Drive, Glendale, Arizona 85308, Phone: (888) 807-8090 Fax: (602) 298-4189

www.commercialslicerscompany.com